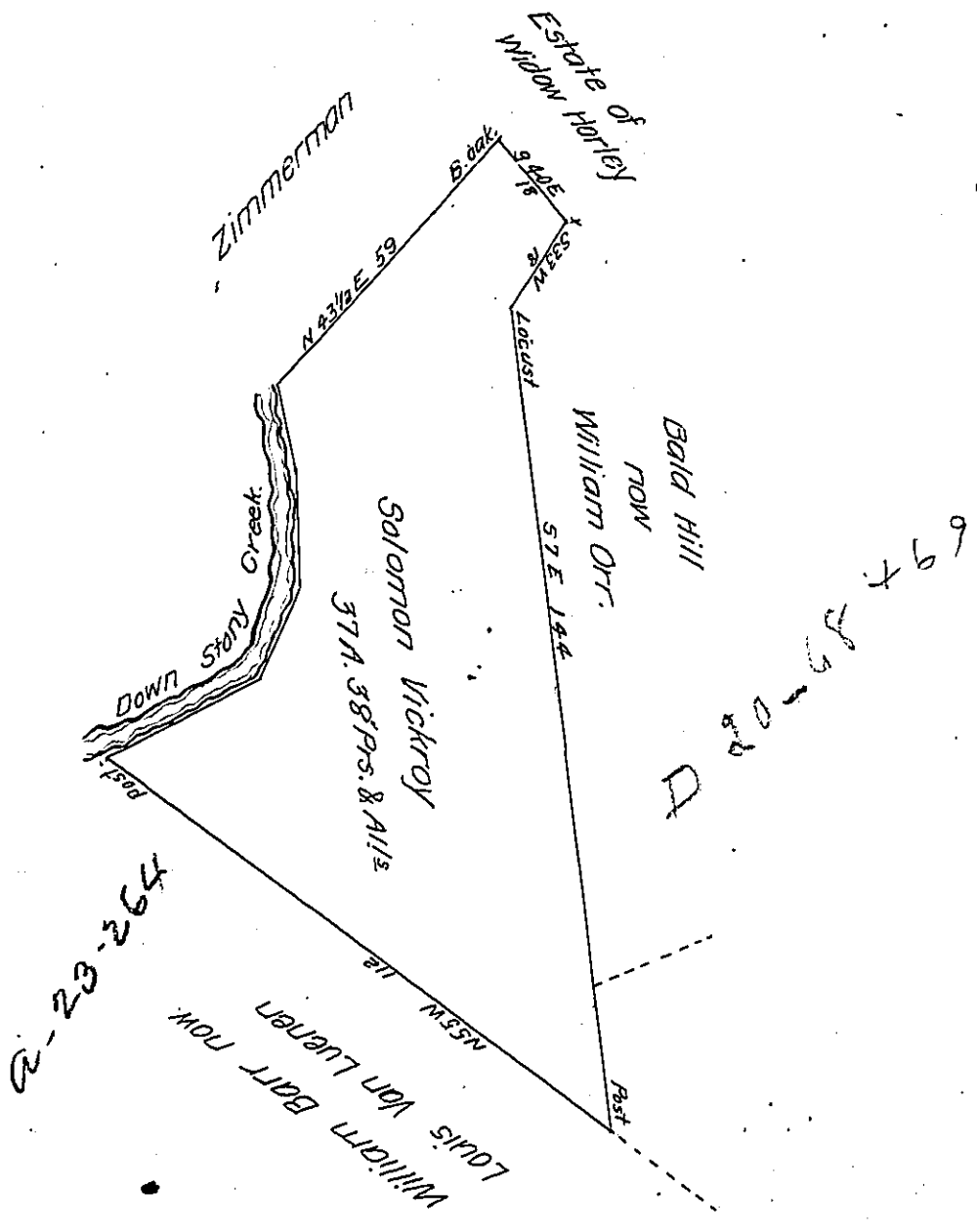


FORM NO. 1.



Courses & distances down

- Story Creek
- N 63 E 32
- N 26 E 16
- N 1 W 21
- N 14 W 14^s

Draft of a tract of land containing thirty seven acres and thirty eight perches and allowance of six per cent for roads &c. Situated in Conemaugh Township in the County of Cambria Surveyed the 25th January A.D. 1871 in pursuance of a Warrant granted to Solomon Vickroy dated sixth of May 1786.

To J.M. Campbell Esquire
Surveyor General.

Henry Scanlan —

IN TESTIMONY that the above is a copy of the original remaining on file in the Department of Internal Affairs of Pennsylvania, made conformably to an Act of Assembly approved the 16th day of February 1833, I have hereunto set my hand and caused the Seal of said Department to be affixed at Harrisburg, this Seventeenth day of May 1907

Henry Howland

Secretary of Internal Affairs.